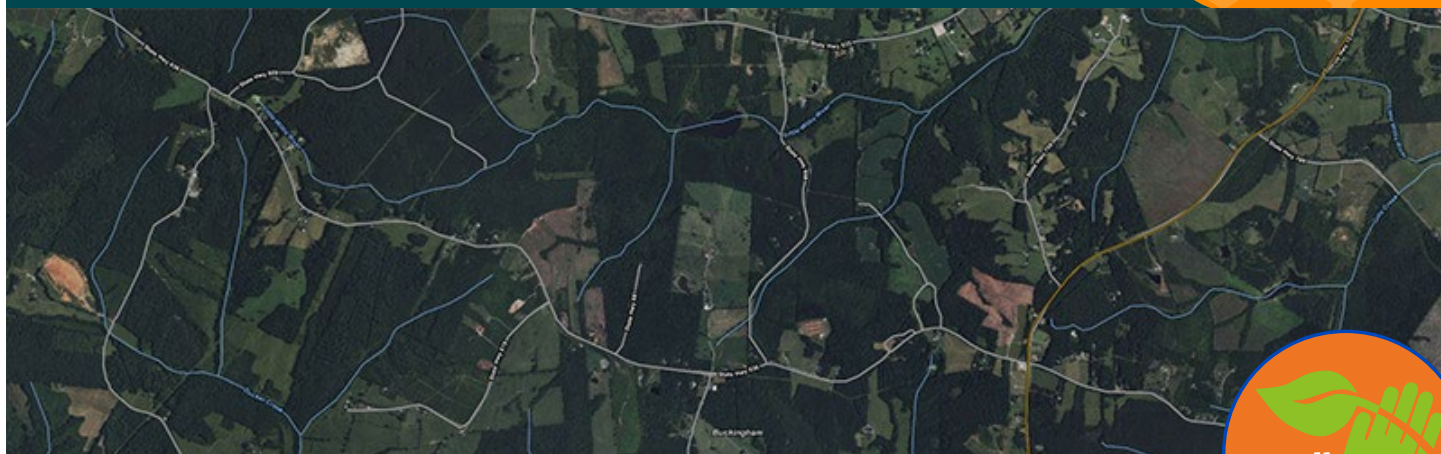


# Understanding Your Soils Using Web Soil Survey



Wednesday, January 31, 2024 · 10 am–noon · **FREE**

Lake Country Advanced Learning Center

118 E. Danville Street, South Hill, VA

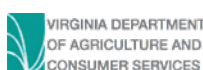
*Space is limited to 10 participants.*

Tammy Holler, nutrient management specialist for SFOP, will teach participants about the benefits of using the USDA online program, Web Soil Survey. WSS provides soil data and information produced by the National Cooperative Soil Survey. The soil survey is a detailed report on the soils of more than 95 percent of the nation's counties. It has maps with soil boundaries, photos, descriptions, and tables of soil properties and features. This will be a hands-on computer workshop. Using the Web Soil Survey program, we will look at each farmer's farm soil data.



Register at  
[ext.vsu.edu/calendar](https://ext.vsu.edu/calendar)

For more information, contact Marilyn Estes at  
804-481-0485 or [mestes@vsu.edu](mailto:mestes@vsu.edu), or Tammy Holler  
at 804-229-2730 or [tholler@vsu.edu](mailto:tholler@vsu.edu).



Visit [ext.vsu.edu](https://ext.vsu.edu) for information on this and other upcoming events.



VSU COLLEGE OF AGRICULTURE  
@VSU\_AG

If you are a person with a disability and desire any assistive devices, services or other accommodations to participate in this activity, please call 804-524-3292 / TDD 800-828-1120 during business hours of 8 am and 5 pm to discuss accommodations five days prior to the event.

Virginia Cooperative Extension is a partnership of Virginia Tech, Virginia State University, the U.S. Department of Agriculture, and local governments. Its programs and employment are open to all, regardless of age, color, disability, gender, gender identity, gender expression, national origin, political affiliation, race, religion, sexual orientation, genetic information, military status, or any other basis protected by law.